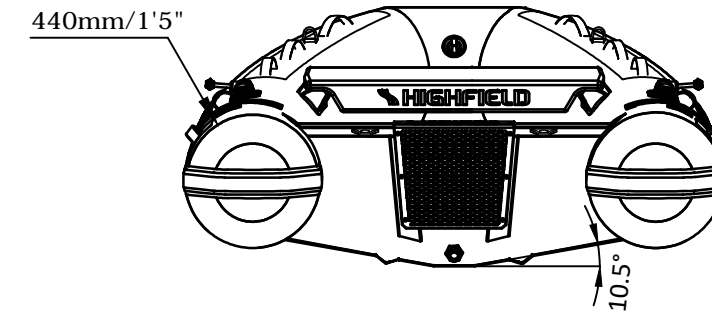
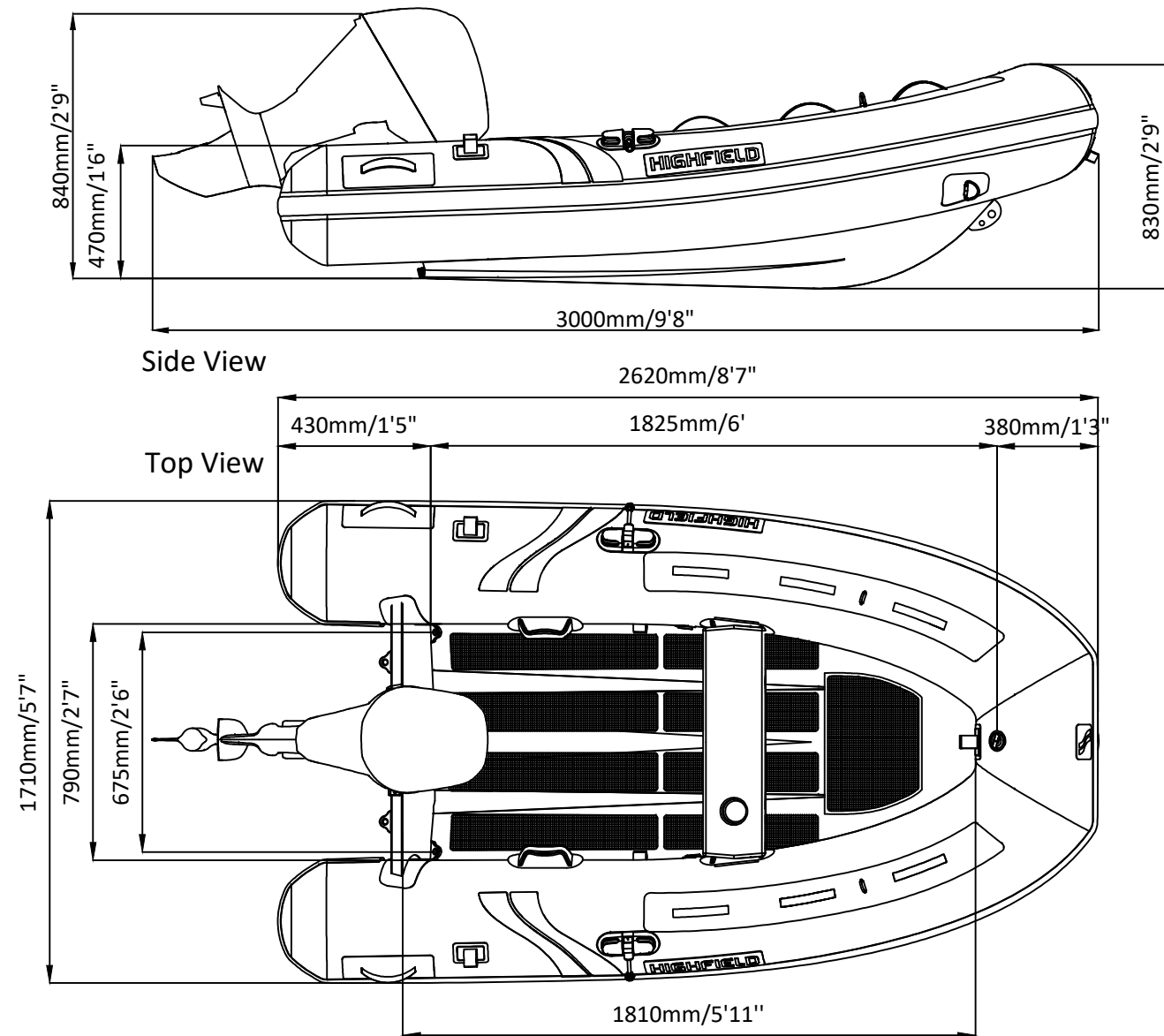
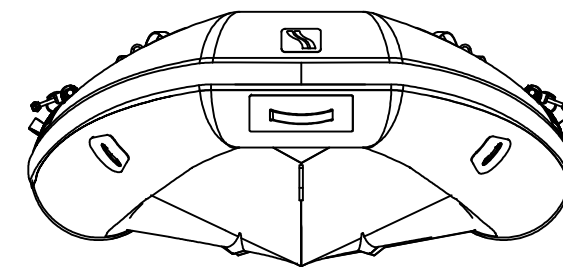


# ULTRALITE 260LT

# SPECIFICATIONS



Rear View



Front View

SPECIFICATIONS AND MAXIMUM CAPACITIES (Subject to change without notice. Tolerances: Dimensions ±2.5% Weight ±5%)

MODEL	ISO 6185 PART	ISO 6185	Passengers		#	Weight		Shaft	Outboard Engine		Molded seat		Oar		Fuel tank Capacity	Rollbar		Wet Weight (Approximate) 10HP (7.46KW) +Fuel		AIR CHAMBERS	Pressure					
			KG	LB		KG	LB		KG	LB	KG	LB	KG	LB		KG	LB	PSI	BAR							
UL260LT	2	C	358	789	3+1	263	579	S	7.46	10	60	132	36.5	80	2.5	5.5	2	4.4	/	/	/	108.3	239	3	3.63	0.25

Weight: Boat only, not including molded seat, oars and other accessories.