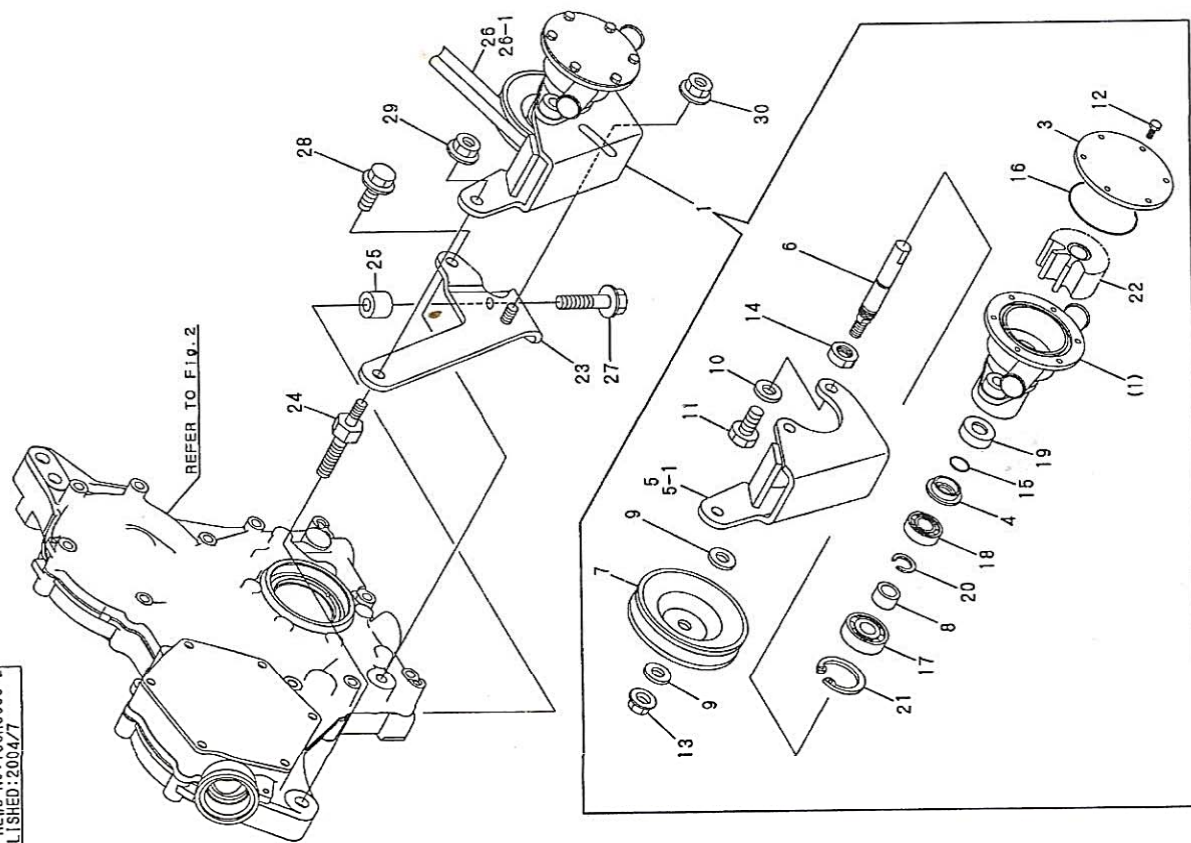


Fig.13. COOLING SEA WATER PUMP

P/C NEWS No.:Y00R5600-2
PUBLISHED:2004.7



REF. LEV. PARTS NO. DESCRIPTION QTY I R

REF.	LEV.	PARTS NO.	DESCRIPTION	QTY	I	R
1		128990-42500	CSW-P CMP	1		
3		X0142398	COVER	1		
4		X0145050	PLATE	1		
5		128990-42150	BRACKET A,CSW-P	1		
5-1		128990-42151	BRACKET A,CSW-P	1		F 1
		(A=E#E01733)				
6		X0146541	SHAFT, FAN	1		
7		124070-42400	V-PULLEY, C.W. PUMP	1		
8		X0146542	SPACER	1		
9		X014678901	WASHER	2		
10		X00353309	WASHER	2		
11		X00141916	SCREW	2		
12		128990-42520	SCREW	6		
13		X00190050	LOCK NUT	1		
14		X00183200	NUT	1		
15		X02173432	O-RING	1		
16		X02173476	O-RING	1		
17		X03431760	BALL BEARING	1		
18		X03431748	BALL BEARING	1		
19		X02233010	RIP SEAL	1		
20		X00370012	RETAINING RING	1		
21		X00371732	RETAINING RING	1		
22		128397-42200	IMPELLER	1		
22-1		128990-42200	IMPELLER, C. WATER	1		R
		(A=*2004.05)				
23		128990-42160	BRACKET B,CSW-P	1		
24		128990-42170	BOLT,CSW-P SPACER	1		
25		128990-42180	COLLAR	1		
26		128990-77350	V BELT,M20	1		
26-1		104511-78780	V-BELT,M19	1		F 1
		(A=E#E01733)				
27		26105-060302	BOLT M 6X 30 PLATED	1		
28		26105-080202	BOLT M 8X 20 PLATED	1		
29		26366-080002	NUT M 8	1		
30		26366-080002	NUT M 8	1		

Remarks
(1)INTERCHANGEABLE BY SIMULTANEOUS
REPLACEMENT WITH REF.NO.5-1,26-1.